

OAKRIDGE ESTATES GREENBELT TREE INVENTORY

Prepared by: Larry Riggs

Date: February 19, 2007

[Note: This document should be printed in *color* as greenbelt and tree notations may not be clearly visible in black and white.]

Instructions to Tree Trimmers

There are 118 greenbelt trees to be trimmed on a two-year cycle:

- ✦ In odd years (e.g. 2007), trim the 59 trees in **Areas 1 and 2**. This constitutes the **Odd Year Set**.
- ✦ In even years (e.g. 2008), trim the 59 trees in **Areas 3 through 9**. This constitutes the **Even Year Set**.

Purpose

This document identifies all the greenbelt trees for which the Oakridge Estates Community Association has maintenance responsibility, i.e., which need periodic trimming. It serves the following purposes:

- ✦ When the Association goes out to bid to select a tree trimmer, this document is supplied to the bidders so all have equal knowledge of the task. Subsequently, when a bidder is selected to perform the tree-trimming task, the foreman in charge of the trimming may refer to the document to ensure the task is performed as bid.
- ✦ During that period—a week or so—of the year when the trees are being trimmed, a Board and/or Landscaping Committee member or members may reference this document and monitor the trimming process to ensure it is done to the Association's satisfaction. Monitoring is essential as in the past we have experienced trimming errors such as skipping trees or trimming the same trees two years in a row.
- ✦ Since this document, along with tree-trimming dates (when they become known), is posted on the community website, homeowners living in the shadow of greenbelt trees will know when trimming is about to occur, and can communicate any special trimming request to the management company ahead of time.

Document Creation Methodology

I obtained aerial views of Oakridge Estates from www.toaks.org/living/mapguide.asp, part of the Thousand Oaks Web site.

I printed out these images and walked the greenbelts, marking tree locations on the printouts. Only trees needing professional trimming were selected. Using Adobe Photoshop, I added identifiers to these images to show location and tree type. I printed out these Photoshop-enhanced images and walked the greenbelts one more time to verify accuracy. I made necessary corrections and created the final images that appear in this document.

I've retained the Adobe Photoshop graphics (.psd) files containing identifiers for each greenbelt tree. As our tree inventory changes, the files can be modified and this document updated.

Tree Locations

Trees requiring trimming are located in nine areas within Oakridge Estates greenbelts. Figure 1 illustrates these areas.



Figure 1 Numbered Oakridge Estates Tree Trimming Areas

Table 1 assigns names to these nine areas and identifies the tree count for each and the corresponding figures that show the locations and types of trees. The **Area No** column references the numbers in Figure 1. The **Trim Year** column indicates whether trees in that area are to be trimmed in an odd or an even year.

Area No	Tree Trimming Area Name	No of Trees	For Details See	Trim Year
1	Reino greenbelt	43	Figure 2 & Figure 3	Odd
2	Pepper Tree greenbelt	16	Figure 4	Odd
3	Cayo Grande and Las Colinas greenbelt	4	Figure 5	Even
4	Las Colinas greenbelt	29	Figure 5 & Figure 6	Even
5	Calle Alta Vista and Las Colinas greenbelt	3	Figure 6	Even
6	Calle Alta Vista Open Space greenbelt	5	Figure 7	Even
7	Lesser greenbelt	11	Figure 7	Even
8	San Telmo greenbelt	4	Figure 8	Even
9	Top of Calle Alta Vista greenbelt	3	Figure 9	Even
TREE TOTAL		118		

Table 1 Tree Inventory Summary by Greenbelt

Tree Types and Counts by Greenbelt

Table 2 identifies the tree types and counts for each of these nine areas. The **Code** column contains the tree codes that appear on the figures that follow. The location of these 1- and 2-character codes on each figure corresponds to the tree's location on the greenbelt. **GB1** to **GB9** represent the nine greenbelts and correspond to numbers in the **Area No** column in Table 1.

Code	Tree Description	GB1	GB2	GB3	GB4	GB5	GB6	GB7	GB8	GB9	Tree Totals
A	Acacia							3			3
B	Bottlebrush		2								2
C	Carrotwood							1			1
E	Eucalyptus	26	13	1	26	3	1	4	1		75
Pe	Pepper	1			2						3
Pi	Pine		1		1						2
Pr	Flowering Pear	9					4				13
S	Sycamore	7		3					3	3	16
W	Willow							3			3
Totals		43	16	4	29	3	5	11	4	3	118

Table 2 Tree Codes and Counts by Greenbelt



Figure 2 Trees in North End of Area 1



Figure 3 Trees in South End of Area 1

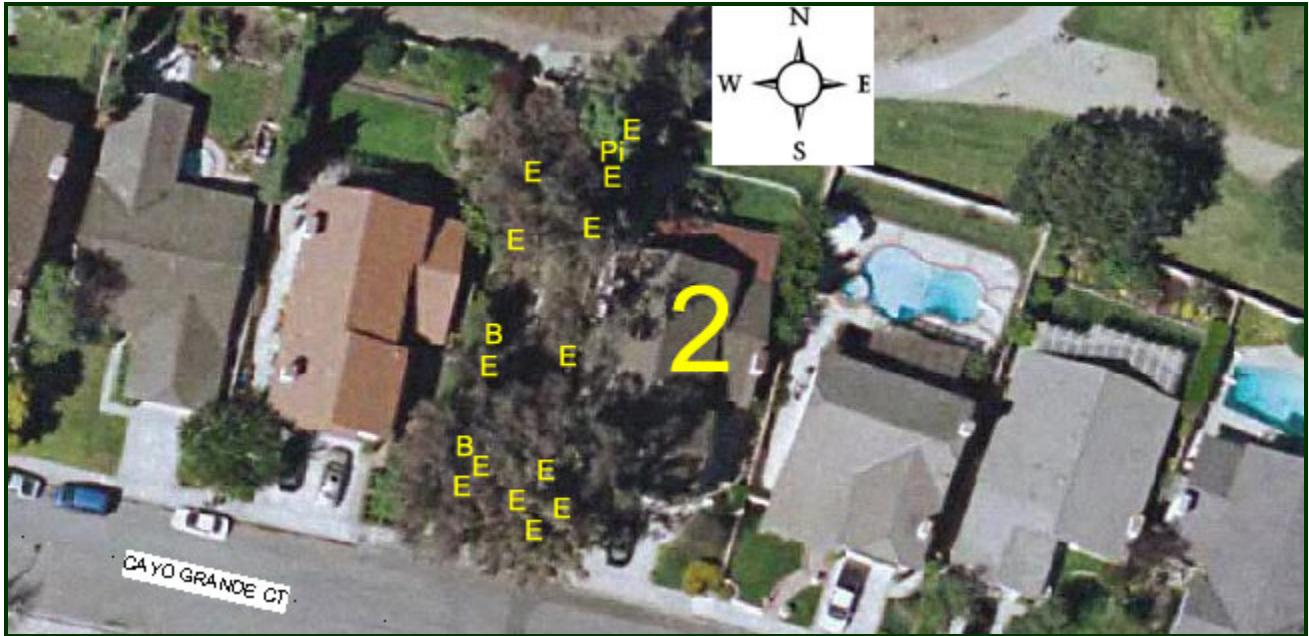


Figure 4 Trees in Area 2



Figure 5 Trees in North End of Area 4 and in Area 3 (4 trees only)



Figure 6 Trees in Area 5 (3 trees only) and in South End of Area 4

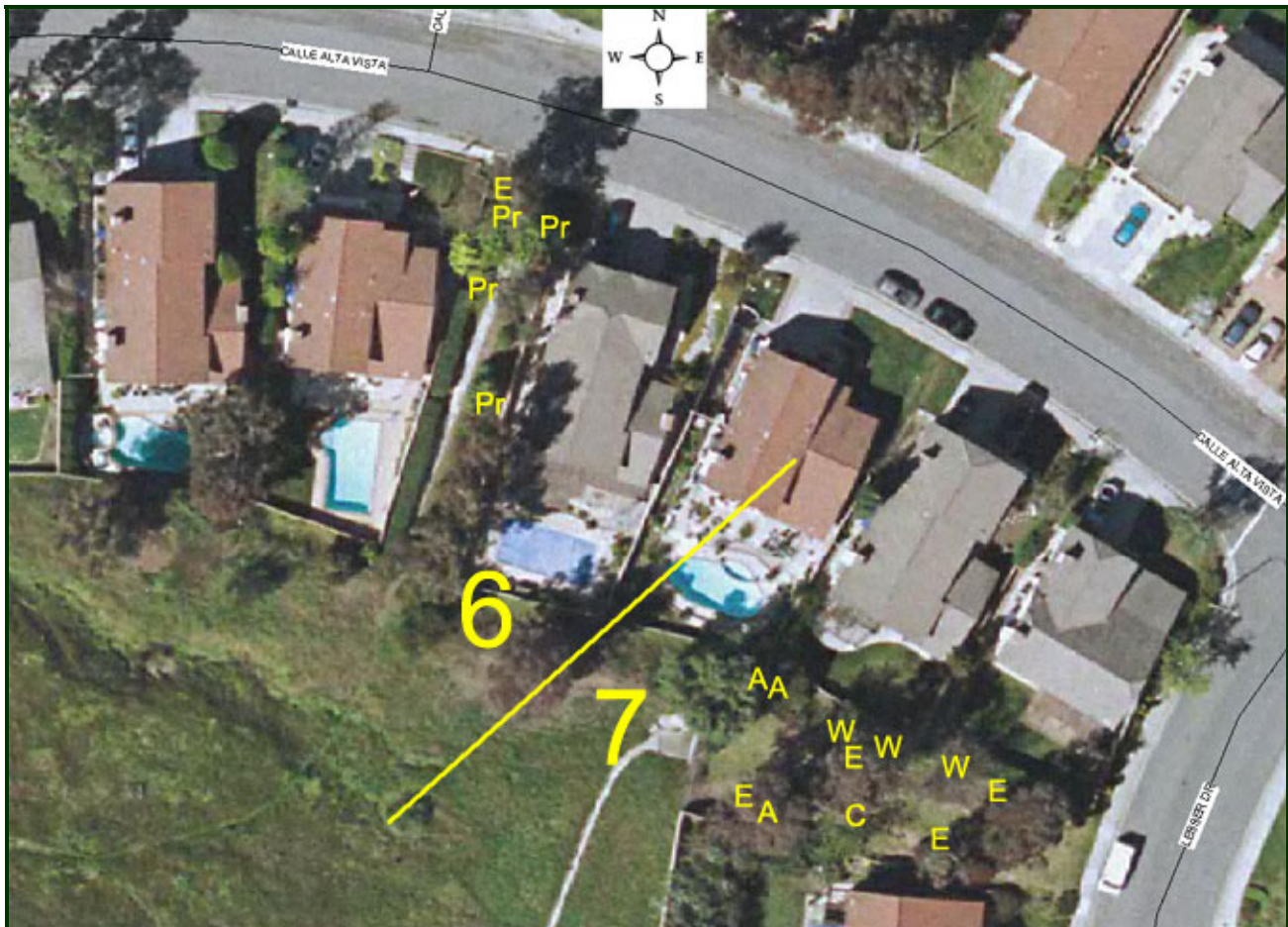


Figure 7 Trees in Area 6 and in Area 7



Figure 8 Trees in Area 8 (area boundary is circumscribed by the yellow border)



Figure 9 Trees in Area 9 (area boundary is circumscribed by the yellow border)